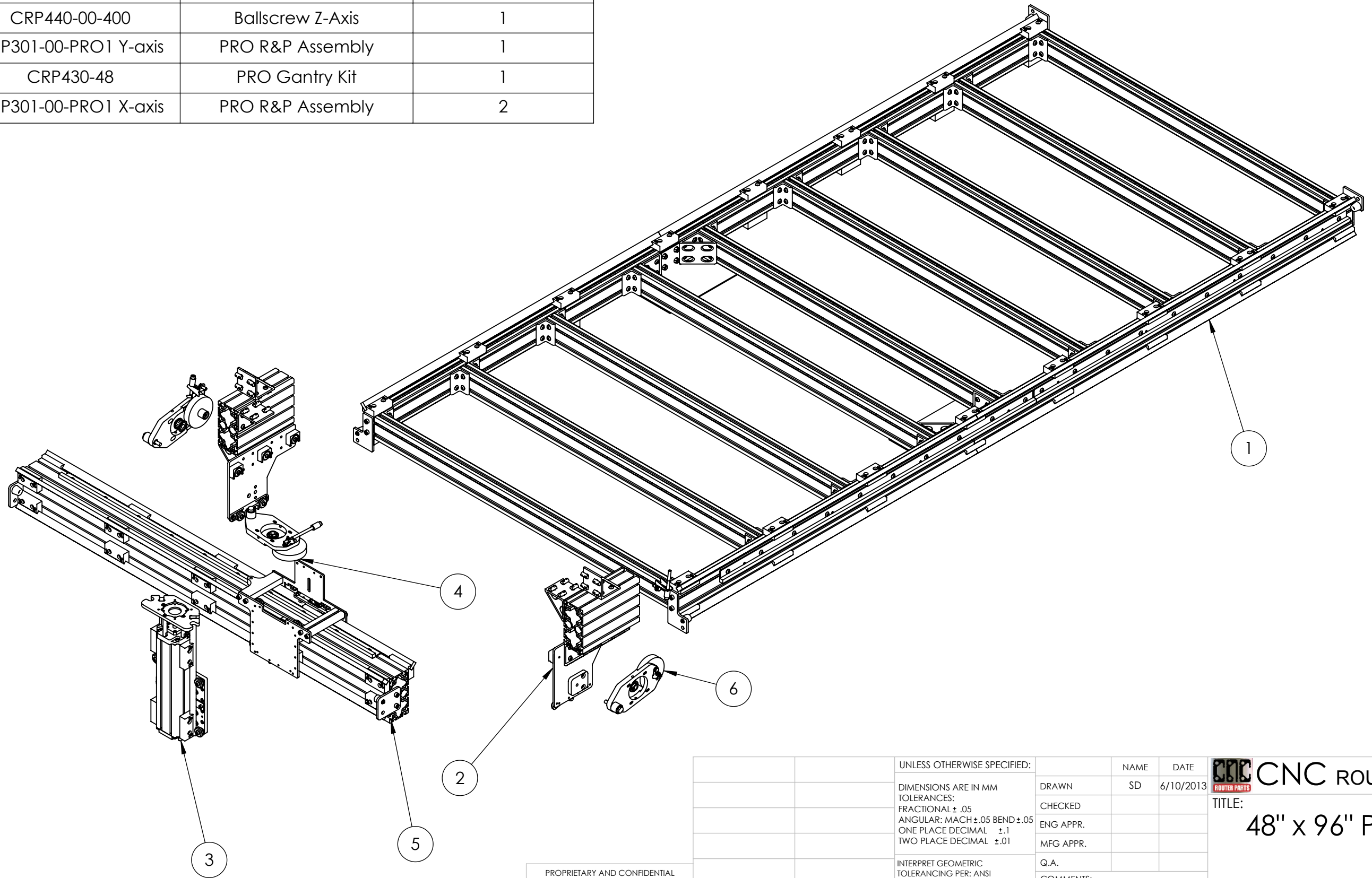



ITEM NO.	PART NUMBER	DESCRIPTION	QTY.
1	CRP410-4896	PRO 4896 Base Kit	1
2	CRP420-00	PRO Riser Assembly	2
3	CRP440-00-400	Ballscrew Z-Axis	1
4	CRP301-00-PRO1 Y-axis	PRO R&P Assembly	1
5	CRP430-48	PRO Gantry Kit	1
6	CRP301-00-PRO1 X-axis	PRO R&P Assembly	2



PROPRIETARY AND CONFIDENTIAL
 THE INFORMATION CONTAINED IN THIS
 DRAWING IS THE SOLE PROPERTY OF
 CNC ROUTER PARTS.
 ANY REPRODUCTION IN PART OR AS A
 WHOLE WITHOUT THE WRITTEN PERMISSION
 OF CNC ROUTER PARTS IS PROHIBITED.

		UNLESS OTHERWISE SPECIFIED:		NAME	DATE	 CNC ROUTER PARTS TITLE: 48" x 96" PRO Kit
		DIMENSIONS ARE IN MM TOLERANCES: FRACTIONAL $\pm .05$ ANGULAR: MACH $\pm .05$ BEND $\pm .05$ ONE PLACE DECIMAL $\pm .1$ TWO PLACE DECIMAL $\pm .01$		DRAWN	SD	
		INTERPRET GEOMETRIC TOLERANCING PER: ANSI		CHECKED		
		MATERIAL		ENG APPR.		
		FINISH		MFG APPR.		
NEXT ASSY	USED ON			Q.A.		
APPLICATION		DO NOT SCALE DRAWING		COMMENTS:		
				SIZE	DWG. NO.	REV
				B	PRO4896	A
				SCALE: 1:12 WEIGHT:		SHEET 1 OF 1