

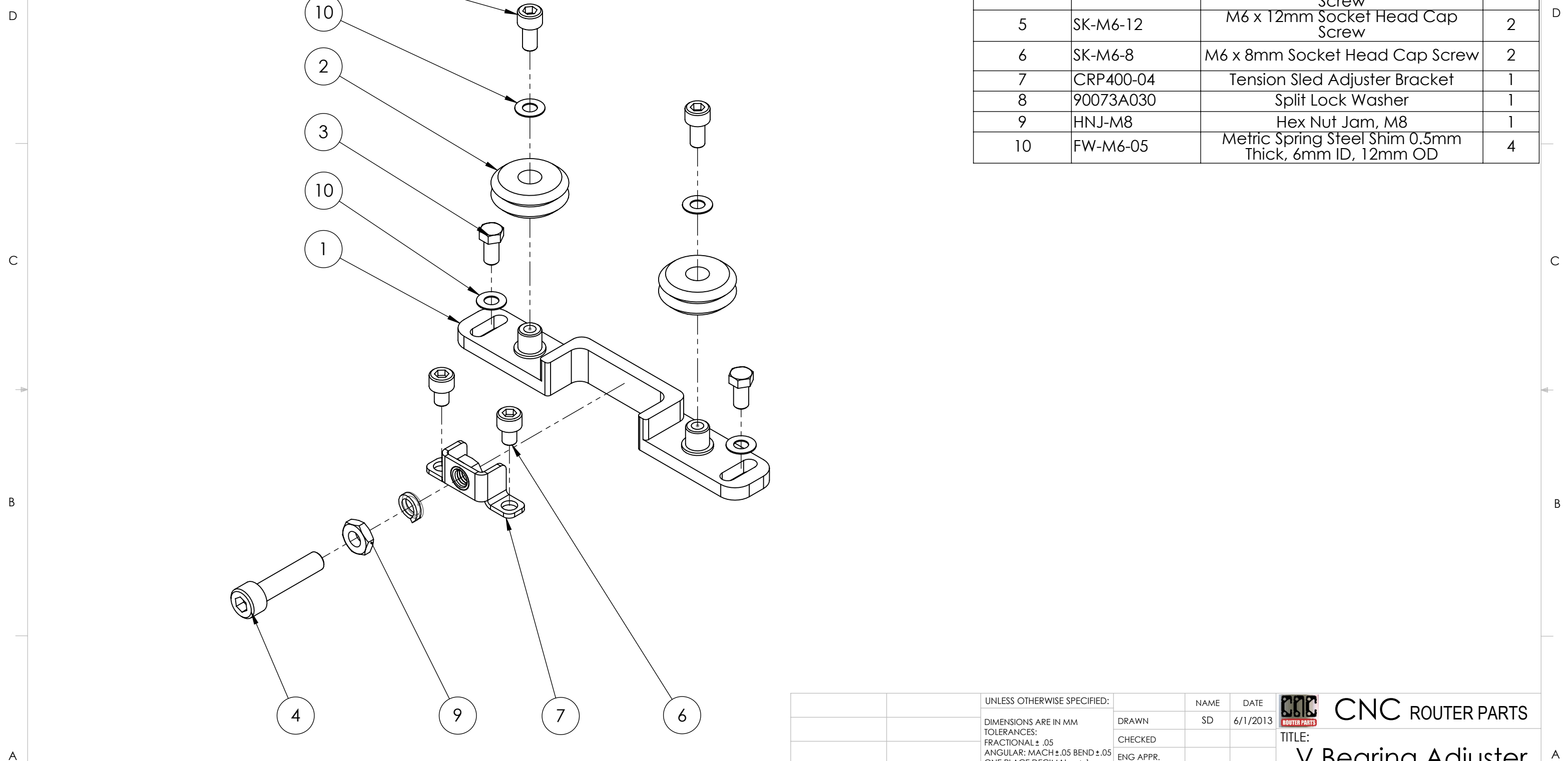
ITEM NO.	PART NUMBER	DESCRIPTION	QTY.
1	VB-W2	V-roller Bearing	3
2	8016-240	8016 Extrusion, 240mm	1
3	40-4338	8 Hole inside corner gusset	4
4	BHCP-M8-12	M8 x 12mm Button Head Cap Screw	10
5	TNR-M8	T-Nut, Roll-in Ball, M8	24
6	BHCP-M8-16	M8 X 16mm Button Head Cap Screw	24
7	CRP421-01	R&P Attachment Bracket	1
8	CRP420-04	PRO Gantry Riser Plate	1
9	CRP400-02-00	V-Bearing Adjuster Sled Assembly	1
10	CRP400-05	V-Con Wiper	3
11	B2M	Bushing, Concentric, 6mm	3
12	SK-M6-25	M6 x 25mm Socket Head Cap Screw	3
13	FW-M6-05	Metric Spring Steel Shim 0.5mm Thick, 6mm ID, 12mm OD	3

Note: This drawing is for the **right** side.  
Mirror for left side riser

**PROPRIETARY AND CONFIDENTIAL**  
THE INFORMATION CONTAINED IN THIS DRAWING IS THE SOLE PROPERTY OF CNC ROUTER PARTS. ANY REPRODUCTION IN PART OR AS A WHOLE WITHOUT THE WRITTEN PERMISSION OF CNC ROUTER PARTS IS PROHIBITED.

UNLESS OTHERWISE SPECIFIED:		NAME	DATE	<b>CNC ROUTER PARTS</b> TITLE: <b>PRO Riser Assembly</b>	
DIMENSIONS ARE IN INCHES		DRAWN	SD		6/1/2013
TOLERANCES:		CHECKED			
FRACTIONAL ± .05		ENG APPR.			
ANGULAR: MACH ± .05 BEND ± .05		MFG APPR.			
TWO PLACE DECIMAL ± .01		Q.A.		6/1/2013	
THREE PLACE DECIMAL ± .001		COMMENTS:			
INTERPRET GEOMETRIC TOLERANCING PER: ANSI				SIZE DWG. NO. REV	
MATERIAL				B CRP420-00 A	
FINISH				SCALE: 1:4 WEIGHT: SHEET 1 OF 2	
NEXT ASSY	USED ON				
APPLICATION		DO NOT SCALE DRAWING			

8 7 6 5 4 3 2 1



ITEM NO.	PART NUMBER	DESCRIPTION	QTY.
1	CRP400-02	V Bearing Adjuster Sled	1
2	VB-W2	V-roller Bearing	2
3	HC-ZP-M6-12	M6 x 12mm Hex Cap Screw	2
4	SK-M8-35	M8 x 35mm Socket Head Cap Screw	1
5	SK-M6-12	M6 x 12mm Socket Head Cap Screw	2
6	SK-M6-8	M6 x 8mm Socket Head Cap Screw	2
7	CRP400-04	Tension Sled Adjuster Bracket	1
8	90073A030	Split Lock Washer	1
9	HNJ-M8	Hex Nut Jam, M8	1
10	FW-M6-05	Metric Spring Steel Shim 0.5mm Thick, 6mm ID, 12mm OD	4

<p><b>PROPRIETARY AND CONFIDENTIAL</b>                  THE INFORMATION CONTAINED IN THIS DRAWING IS THE SOLE PROPERTY OF CNC ROUTER PARTS. ANY REPRODUCTION IN PART OR AS A WHOLE WITHOUT THE WRITTEN PERMISSION OF CNC ROUTER PARTS IS PROHIBITED.</p>		UNLESS OTHERWISE SPECIFIED:		NAME	DATE	<p><b>CNC ROUTER PARTS</b></p>
		DIMENSIONS ARE IN MM TOLERANCES: FRACTIONAL ± .05 ANGULAR: MACH ± .05 BEND ± .05 ONE PLACE DECIMAL ± .1 TWO PLACE DECIMAL ± .01		DRAWN	SD	
NEXT ASSY      USED ON		INTERPRET GEOMETRIC TOLERANCING PER: ANSI		CHECKED		TITLE: <h3>V Bearing Adjuster Sled Kit</h3>
		MATERIAL		ENG APPR.		
APPLICATION		FINISH		MFG APPR.		SIZE    DWG. NO.    REV <b>B    CRP400-02-00    A</b>
		DO NOT SCALE DRAWING		Q.A.		6/1/2013
				COMMENTS:		SCALE: 2:3    WEIGHT:    SHEET 2 OF 2

8 7 6 5 4 3 2 1